

SLIMSPEC - Clinical Results for Cellulite Treatment

Dr. Michal Yeshurun-Gutshtat, MD

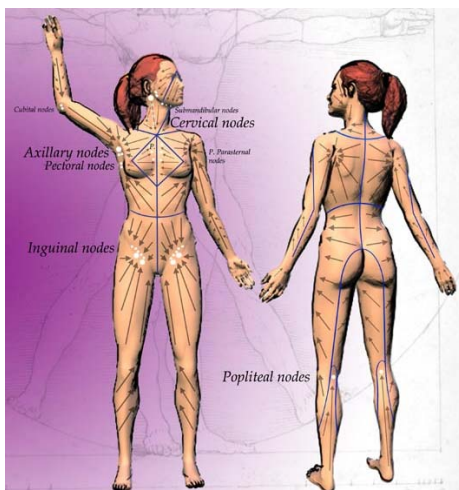
Background

Cellulite describes a condition that occurs mainly in women, and may affect up to 90% of them in the post-adolescent period. Its external characteristics are its location (lower buttocks, outer and posterior thighs and hips), tissue lumpiness and dryness and flabbiness of the skin.

Although not defined as a pathologic condition, the presence of cellulite is an aesthetically unacceptable cosmetic problem for most adult women and can cause significant psychological and self-worth issues.

Cellulite develops when connective tissue between fat cell chambers, and between the chambers and the skin, become thinner and weakened. The elastic fibers that give these connective tissues strength are diminished. Since the septa of subcutaneous fatty tissue in women are often very taut and run perpendicular to the surface of the skin, as the fat cells in the sub-cutis increase in size, they are not held in place by the perpendicular septa, but rather press in the direction of the dermis/epidermis and are visible as dimples on the surface of the skin (cellulite). In addition to this, these often very stiff, inelastic septa are largely incapable of accommodating the increase in volume in the subcutaneous connective tissue, thus causing further dimpling.

Additional important factors in the formation of cellulite are the deterioration of dermal vasculature (alterations of the pre-capillary arteriolar sphincter) causing edema and tissue hypoxia with thickening and sclerosis of the fibrous septa.



Recommended treatment protocol

Chronic inflammatory processes with diffuse infiltration of macrophages and lymphocytes into the fibrous septa also take place in this process.

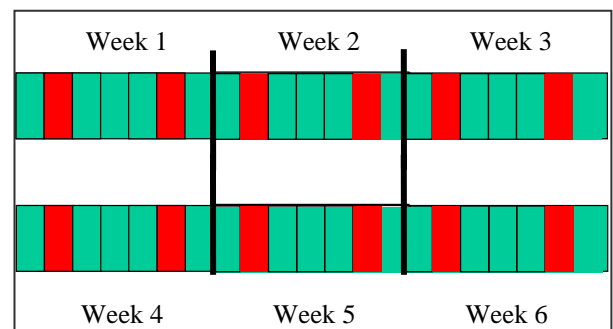
Treatment methods

Both time and efforts are spent in search of the optimal treatment of this aesthetic problem. Iontophoresis, ultrasound, thermotherapy, pressotherapy (pneumatic massaging in the direction of the circulation), lymphatic drainage (massage technique to stimulate lymphatic flow), electrolipophoresis (application of a low frequency electric current) have all been tried. Yet, none of these techniques provides an effective solution.

Medispec Ltd., a highly esteemed international medical equipment company, specializes for years in the development of Shock Wave Therapy medical equipment, has developed the **Slimspec** – a Acoustic Radial Wave Therapy aesthetic treatment device, which is non-invasive, compact and user friendly.

Method

Slimspec treatment protocol includes twelve treatment sessions during six weeks of twenty minutes each. Acoustic Radial Wave Treatment with the **Slimspec** is combined with Slimcream – a unique anti-cellulite cream, specially developed for integrated treatment with the **Slimspec**. Slimcream is spread on the treatment area prior to treatment, and the acoustic radial wave enhances the penetration of the anti-cellulite active ingredients into the cellulite area.

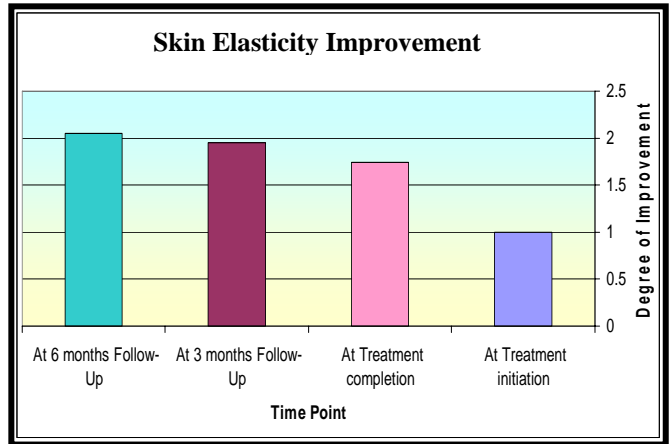
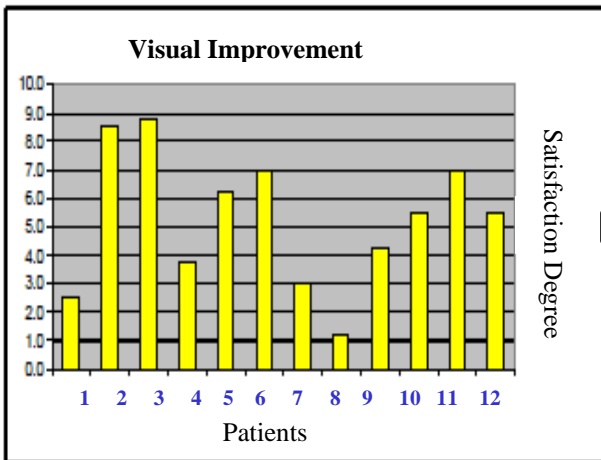


Recommended treatment method

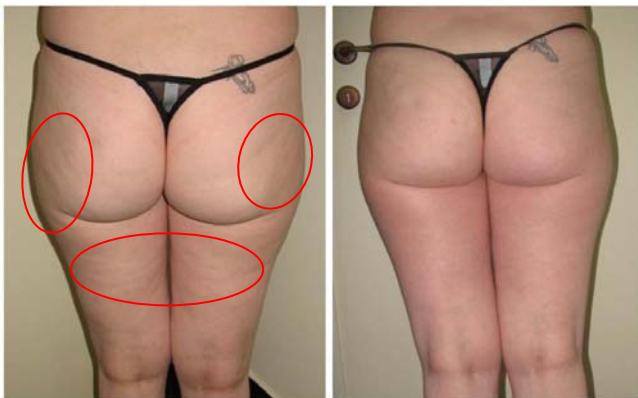
Results

Based on clinical studies, 66% of treated patients will observe a visual improvement of cellulite condition. Also the skin elasticity will improve

over the course of ARWT therapy and will reveal a 74% improvement at the end of therapy. At 3- and 6-month follow-ups, skin elasticity will be improved by 95% and 105%, respectively.



"Before and after" treatment pictures below demonstrate Slimspec effect following several treatments.



Before Treatment

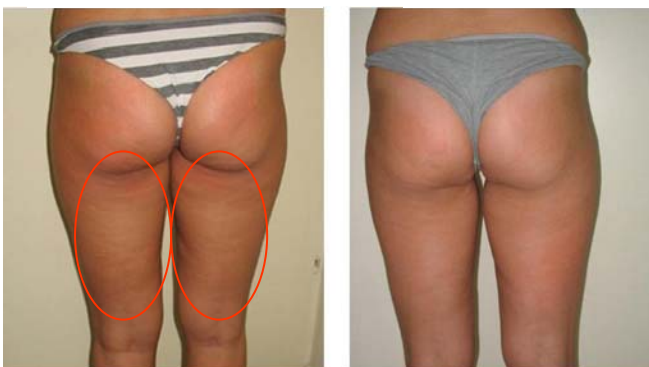
After 12 Treatments



Before Treatment



After 12 Treatments



Before Treatment

After 9 Treatments



Before Treatment



After 12 Treatments

Summary

The photos of the patients after the Slimspec treatment demonstrate a significant improvement in the cellulite level as well as in the skin firmness. The combined action of Slimspec and Slimcream as well as the Slimspec individually, induce enhancement of blood supply to the treated area,

deep and effective lymphatic massage which reduces fat cell edema and level of toxins in the edematous tissue and enhances connective tissue genesis in the supporting skeleton of the skin. All of the above enormously improved the skin appearance in the treated area of cellulite patients.