



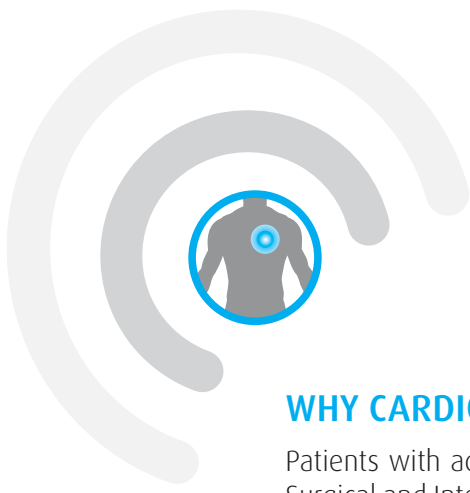
# CARDIOSPEC<sup>C</sup> ESMR<sup>TM</sup>

## Extracorporeal Shockwave Myocardial Revascularization

The Medispec Cardiospec<sup>C</sup> ESMR system is a non-invasive therapy approach using Shockwave technology for Extracorporeal Myocardial Revascularization. Ischemic myocardial areas no longer accessible by conventional revascularization therapies could be treated with the Cardiospec ESMR therapy to relieve symptoms resulting from myocardial ischemia. The treatment is performed using a shockwave generator designed to address the unique clinical-anatomical requirements of the chest cavity.

- Quick and safe non-invasive treatment for no-option patients with myocardial ischemia
- Large focal zone - short treatment time and total transmural coverage
- Precision localization system - high success rates through a safe procedure
- Broad echocardiography compatibility
- Considerable reduction of Angina symptoms
- Dramatic improvement in patient's quality of life





## WHY CARDIOSPEC<sup>C</sup> ESMR?

Patients with advanced Coronary Artery Disease (CAD) frequently have recurrent Angina. Surgical and Interventional options for these patients typically have been exhausted or will result in only partial revascularization.

ESMR offers new hope for these patients and provides therapy which complement existing treatment procedures.

## CARDIAC ULTRASOUND IMAGING

A cardiac ultrasound imaging system is used to locate the treatment area and to map the exact position and extent of the ischemic zone. Shockwaves are then delivered via the anatomical acoustic window to the treatment area under R-gated E.C.G. Several treatment sessions may be required to obtain optimal results.

The angiogram below demonstrates collateral formation and improved perfusion.



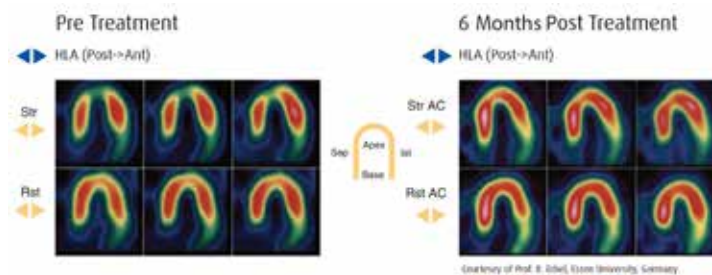
Courtesy of Prof. Morgan Fu, Division of Cardiology, Chang Gung Memorial Hospital, Keelung, Taiwan

## CLINICAL BENEFITS

Shockwave therapy is the optimal therapy approach for Ischemic Heart Disease.

6 Months Post Baseline demonstrates: reduction in CCS Angina class, increase in maximal exercise capacity, increase in exercise tolerance time, improvement in physical limitation, improvement in anginal frequency, improvement in myocardial perfusion, reduction in nitrates intake per week and no acute or long term side effects.

The figure below demonstrates improvement perfusion, 6 months following ESMR, assessed by SPECT.



Courtesy of Prof. E. Albiel, Essen University, Germany

Recently, ESMR's beneficial effects were demonstrated also in the treatment of Chronic Total Occlusion (CTO), Diastolic Dysfunction and Chronic Heart Failure (CHF). Medispec has mounting evidence to propose that ESMR might also be suitable for the treatment of Post Myocardial Infarction (Post MI) patients, and further research is currently underway in this promising area.



203 Perry Parkway, Suite #6, Gaithersburg, MD 20877, USA  
 Tel: +1 (301) 944-1575 | Fax: +1 (301) 972-6098  
 E-mail: [marketing@medispec.com](mailto:marketing@medispec.com)  
[www.medispec.com](http://www.medispec.com)