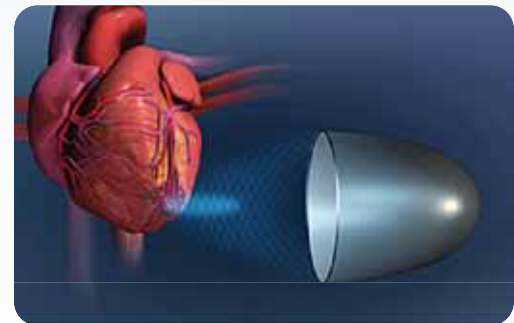


# Extracorporeal Shockwave Myocardial Revascularization (ESMR): Expanding the Horizon

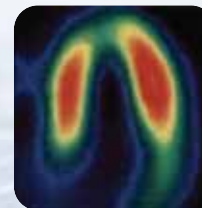
Satellite Symposium organised  
by **Medispec Ltd.**

## ESMR Satellite Symposium

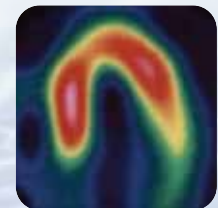
Sunday August 29<sup>th</sup>, 2010  
12:45 - 13:30 hrs  
Room Moscow - Zone A  
(Lunch included)



*Pre ESMR*



*Post ESMR*



To pre-register to this Satellite Symposium,  
please contact [marketing@medispec.com](mailto:marketing@medispec.com)

To learn more visit [www.medispec.com](http://www.medispec.com)



## FACULTY

Dr. A. Lerman (Rochester, US)  
Prof. J. Waltenberger (Maastricht, NL)  
Dr. D. Leibowitz (Jerusalem, IL)  
Dr. E. Shkolnik (Moscow, RU)  
Prof. R. Erbel (Essen, DE)  
Prof. J. Ge (Shanghai, CH)

Management of patients with advanced coronary artery disease (CAD) is a major challenge for the cardiologist and cardiac surgeon. Surgical and interventional options for these patients typically have been exhausted or will result in only partial revascularization. Therefore, therapy remains limited to the use of multiple anti-anginal medications, reduced activity, exertion, and stress level, and significant alteration and limitation of lifestyle.

A new Extracorporeal Shockwave Myocardial revascularization Therapy (ESMR) which couples the ability of low intensity shock waves to induce local angiogenesis to the therapy of angina is becoming a new alternative in the treatment of these patients.

The therapeutic effect of shock waves is attributed to the mechanical pressure and tension that the wave exerts on tissue. Delivery of low intensity shock waves cause shear stress on the vessel wall.

This stimulates angiogenesis-related growth factors (eNOS, VEGF and PCNA), initiating the angiogenesis process.

ESMR offers new hope for these patients and provides non-invasive therapy which complement existing revascularization procedures.

We hope you will be able to join us for this important Satellite Symposium session. Our international faculty will coconsider this challenge whilst reviewing the latest clinical data from the clinical practice perspective and invite you to take part in the post-presentation discussion.

## PROGRAMME

- 12:45 The approach to the non revascularized patient.  
A. Lerman (Rochester, US)
- 12:53 Extracorporeal shockwave myocardial revascularization treatment for refractory angina - review.  
J. Waltenberger (Maastricht, NL)
- 13:01 Results of a randomized trial on patients with advanced coronary artery disease using extracorporeal shockwave myocardial revascularization therapy.  
D. Leibowitz (Jerusalem, IL)
- 13:09 New treatment option for ischemic heart failure using shockwaves.  
E. Shkolnik (Moscow, RU)
- 13:17 Expanding the horizon - new treatment option for chronic total occlusion patients.  
R. Erbel (Essen, DE)
- 13:25 Q&A

